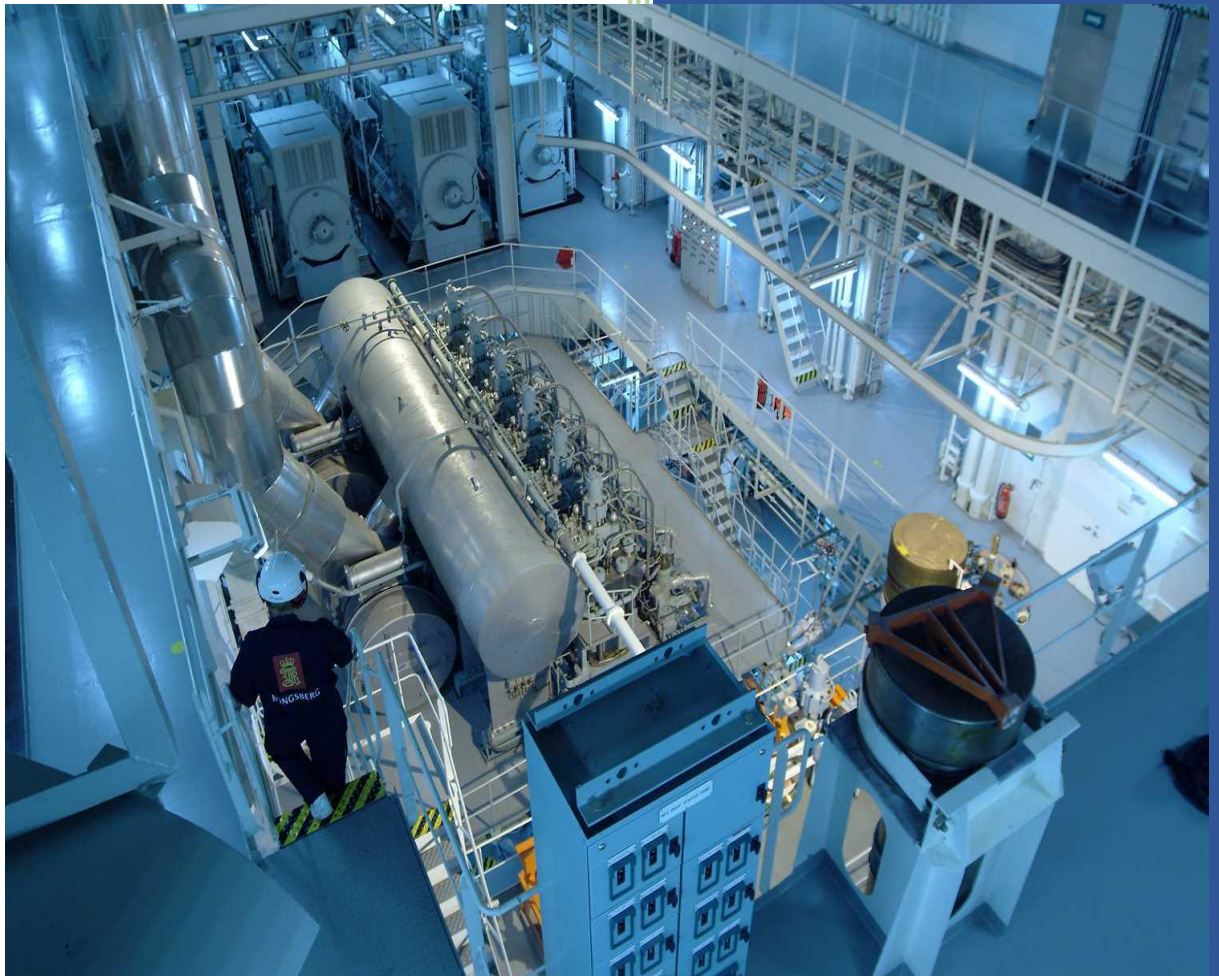


GoldLED

2025

Ceiling and Wall Lights



Contents

| | |
|--|-------------------------------------|
| GL TLP 67 MLED Ceiling Light..... | Error! Bookmark not defined. |
| GL- TLP 67 T8 LED tube Ceiling Light..... | 3 |
| GL-TZP 44 MLED marine Application (for low ambient temperatures)..... | 5 |
| GL- LL Ceiling Light for 2xT8 LED Tubes Premium..... | 6 |
| GL-FLBIA Light Bars in- and out-door application 30Watt 4800Lumens | 7 |
| GL-FLBIA Light Bars in- and out-door application 60Watt 9.600 Lumens | 8 |
| GL-FLBIA Light Bars in- and out-door application 90Watt 14.400Lumens | 9 |
| LED Tube Tri-Proof Light 10Watt 1.500Lumens..... | 10 |
| LED Tube Tri-Proof Light 20Watt 3.000Lumens..... | 11 |
| Ultra Slim LED Ceiling Light 12Watt 1.200Lumens | 12 |
| Ultra Slim LED Ceiling Light 18Watt 1.800Lumens | 13 |
| Ultra Slim LED Ceiling Light 20Watt 2.000Lumens | 14 |
| GoldLED- SELO Ceiling Light | 15 |
| GoldLED Ceiling Light T8 IP65 (indoor use)..... | 15 |
| LED Tube T8 Isolated Driver for Ships..... | 17 |
| LED Tube T8 Isolated Driver for Ships 580mm (for Japanese ships)..... | 18 |
| LED Tube T8 Isolated Driver for Ships (one pin) | 19 |
| LED Tube T8 Regular | 20 |
| Multi-Purpose Cabinet Lights 20Watt 2.600Lumens..... | 21 |
| Cabin Bunk LED Light 8Watt 800Lume..... | 22 |
| GL- Mirror Light 10W | 23 |
| GL EXP03 MLED EX-Proof Zone 2.22 Metal housing..... | 25 |
| GL-LED Robust Tri-proof ATEX Light..... | 265 |
| SELO – Ex-proof Ceiling Light MLED..... | 276 |

GL -116A Highbay UFO



APPLICATION

Watertight luminaire, for storage yards, working spaces, industrial areas etc

TECHNICAL DATA

Protection degree: IP 65/66

Color Temperature: 3000K-3500K-4000K-4500K-6000K-6500K.

Power factor: $\geq 0,90$

Shine Angle: 90°

Driver: CE Waterproof

LED Chips: Bridgelux 2835/3030 140pcs SMD 1W

Voltage: AC 85V-305V

Surge Protector: 4000V

CE Certificate

Warranty: 5 Years

| Description | Power W | Luminous Flux Lm | Product Size mm | IP Protection |
|----------------------------|---------|------------------|-----------------|---------------|
| GL -116 A Highbay UFO 100W | 100W | 13.000 | Φ275mm | IP65/IP66 |
| GL -116 A Highbay UFO 150W | 150W | 19.500 | Φ320mm | IP65/IP66 |
| GL -116 A Highbay UFO 200W | 200W | 26.000 | Φ350mm | IP65/IP66 |



GL- TLP 67 T8 LED tube Ceiling Light Marine Type



| Description | Power W | Luminous Flux Lm | Dimensions mm | IP Protection | IK Class |
|---------------------------------|---------|------------------|---------------|---------------|----------|
| GL-TLP 67 210 T8 LED tube/1x9W | 1x9W | 1x1080Lm | 730x153x110 | IP66/IP67 | IK10 |
| GL-TLP 67 220 T8 LED tube/2x9W | 2x9W | 2x1080Lm | 730x153x110 | IP66/IP67 | IK10 |
| GL-TLP 67 410 T8 LED tube/1x18W | 1x18W | 1x2160Lm | 1340x153x110 | IP66/IP67 | IK10 |
| GL-TLP 67 420 T8 LED tube/2x18W | 2x18W | 2x1260Lm | 1340x153x110 | IP66/IP67 | IK10 |

Application: Dustproof and watertight luminaire for T8 tubes. Designed for open decks, power stations and other ship, industrial facilities with high humidity.

Approvals: According to the rules or relevant classification societies, additional IEC

TECHNICAL DATA

Housing: Zinc coated steel or stainless-steel power painted White.

Diffuser: stabilized strengthened polycarbonate

Closing clips: stainless steel

Mounting: Bolt kit or bracket (according to order)

Mounted plate: zinc coated steel sheet white powder painted.

Protection degree: IP 66/67

Protection class: I

Power factor: $\geq 0,90$

Ambient temperature: from -20°C to +45°

Options:

Stainless steel housing (dedicated to outdoor marine environment)

Emergency unit 3h

Brass glands

WARRANTY: 5 YEARS



GL-TZP 44 MLED marine Application (for low ambient temperatures) Marine Type



| Description | Power W | Luminous Flux Lm | Dimensions mm | IP Protection | IK Class |
|-----------------------|---------|------------------|---------------|---------------|----------|
| GL-TZP 44 MLED220/211 | 2x11W | 2x1250Lm | 730x153x110 | IP66/IP67 | IK10 |
| GL-TZP 44 MLED240/411 | 4x11W | 4x1250Lm | 1340x153x110 | IP66/IP67 | IK10 |

Application: Cold room, refrigerated areas, low ambient temperatures etc.

Approvals: According to the rules or relevant classification societies, additional IEC

TECHNICAL DATA

Housing: Zinc coated steel or stainless-steel, power painted White.

Diffuser: UV stabilized strengthened polycarbonate

Mounting Plate: Zinc coated steel sheet white powder painted.

Closing clips: stainless steel

Mounting: Two mounting holes Ø 9mm or dedicated bracket

Protection degree: IP 66/67

Protection class: I

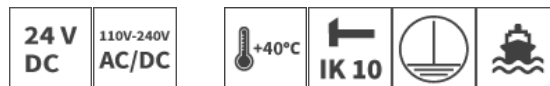
Power factor: ≥0,85

Ambient temperature: from -30°C to +40°

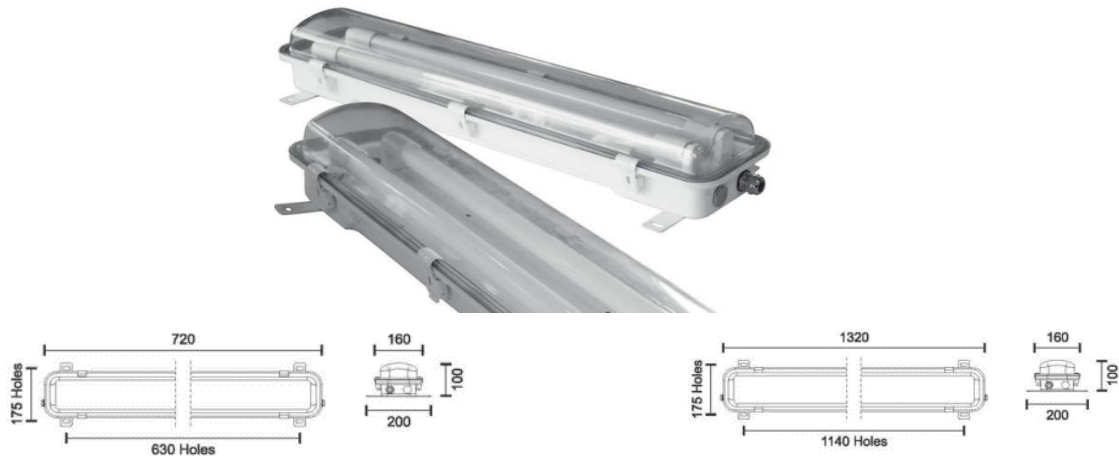
Additional Equipment: Bracket for ceiling or wall installation and for cable tracks

Options: Stainless steel housing, Cable glands for armored cables

WARRANTY: 5 YEARS



GL- LL Ceiling Light for 2xT8 LED Tubes Premium



Body: Zinc coated Steel

Paint: H Anti-UV, Paint Powder coating with high resistance at the corrosion

Cover: Polycarbonate

Ingress Protection: IP66

Clips: INOX

Lamps Holder: G13

Lamps Type: T8 LED TUBE

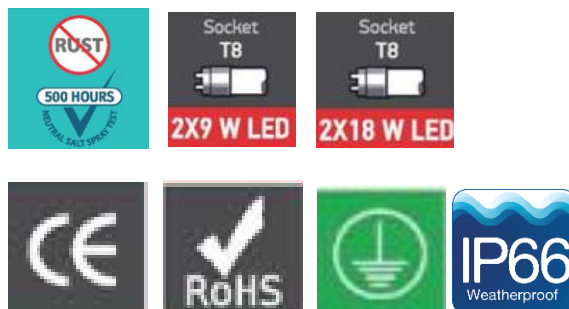
T8 LED Tubes

| Item | Power | Lumen | Warranty |
|---------------------------|-------|--------|----------|
| GoldLED-T8 LED tube 2x 9W | 2x9W | 1800lm | 2 years |
| GoldLED-T8 LED tube 2x18W | 2x18W | 3600lm | 2 years |

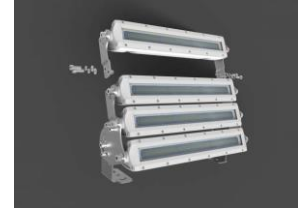
140°



Anticorrosive: 100% success in 500 hours of neutral saltwater spray test



GL-FLBIA Light Bars in- and out-door application 30Watt 4800Lumens Marine Type



| Description | Power | Light Colour | Voltage | Specialities |
|--------------------|-------|--------------|---------------------|---|
| GL-FLBIA 30W -HV | 30W | 3900K | 100-305Vac 50 ~60Hz | Supplied with dimmable external driver |
| GL-FLBIA 30W LV | 30W | 3900K | 10-30Vdc | Supplied with dimmable external driver |
| GL-FLBIA 30W-RT-HV | 30W | 3900K | 100-305Vac 50 ~60Hz | Supplied with dimmable external driver & 360° rotatable bracket |
| GL-FLBIA 30W-RT-LV | 30W | 3900K | 10-30Vdc | Supplied with dimmable external driver & 360° rotatable bracket |

Material: Powder coated anodized seawater resistant aluminium.

Hardware: Marine Grade A4 316 stainless steel.

Finish: White.

TECHNICAL DATA

Wite Beam/ Lens: 100°

Mounting: Adjustable A4 316 Stainless Steel bracket/ thickness (optional 360° rotatable bracket available *1) (optional stacking brackets available *2)

IP Rating: IP67

CRI: > 85

Luminosity: 4800Lumens

Power Source: External driver 100-305Vac 50 ~60Hz (10-30Vdc optional)/ Meanwell HLG-40H-48B Dimmable driver (0-10Vdc – PWM – resistance) / Potted driver

Cable: Supplied with 6mtr power cable

Ambient temperature: from -40°C to ~ +55°C

Additional Equipment: Bracket for ceiling or wall installation and for cable tracks

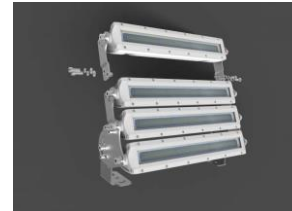
Options: Stainless steel housing, Cable glands for armored cables

Dimensions: 378mmx59,5mmx76,4mm

Fixture Weight: 3,2Kgs.

Compliances: In compliance with rules of maritime classification societies, additional VDE and IEC 60092-306. (Equipment luminaires and lighting accessories for use on vessels)

GL-FLBIA Light Bars in- and out-door application 60Watt 9.600 Lumens **Marine Type**



| Description | Power | Light Colour | Voltage | Specialities |
|--------------------|-------|--------------|---------------------|---|
| GL-FLBIA 60W -HV | 60W | 3900K | 100-305Vac 50 ~60Hz | Supplied with dimmable external driver |
| GL-FLBIA 60W LV | 60W | 3900K | 10-30Vdc | Supplied with dimmable external driver |
| GL-FLBIA 60W-RT-HV | 60W | 3900K | 100-305Vac 50 ~60Hz | Supplied with dimmable external driver & 360° rotatable bracket |
| GL-FLBIA 60W-RT-LV | 60W | 3900K | 10-30Vdc | Supplied with dimmable external driver & 360° rotatable bracket |

Material: Powder coated anodized seawater resistant aluminium.

Hardware: Marine Grade A4 316 stainless steel.

Finish: White.

TECHNICAL DATA

Wite Beam/ Lens: 100°

Mounting: Adjustable A4 316 Stainless Steel bracket/ 4mm thickness (optional 360° rotatable bracket available *1) (optional stacking brackets available *2)

IP Rating: IP67

CRI: > 85

Luminosity: 9.600Lumens/ 160 Lumens/watt

Power Source: External driver 100-305Vac 50 ~60Hz (10-30Vdc optional)/ Meanwell HLG-60H-42B Dimmable driver (0-10Vdc – PWM – resistance) / Potted driver

Cable: Supplied with 6mtr power cable

Ambient temperature: from -40°C to ~ +55°C

Additional Equipment: Bracket for ceiling or wall installation and for cable tracks

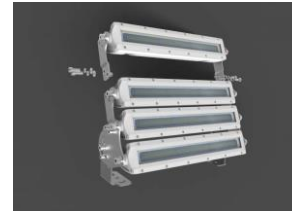
Options: Stainless steel housing, Cable glands for armored cables

Dimensions: 958mmx74,8mmx76,4mm

Fixture Weight: 6,75Kgs.

Compliances: In compliance with rules of maritime classification societies, additional VDE and IEC 60092-306. (Equipment luminaires and lighting accessories for use on vessels)

GL-FLBIA Light Bars in- and out-door application 90Watt 14.400Lumens **Marine Type**



| Description | Power | Light Colour | Voltage | Specialities |
|--------------------|-------|--------------|---------------------|---|
| GL-FLBIA 90W -HV | 90W | 3900K | 100-305Vac 50 ~60Hz | Supplied with dimmable external driver |
| GL-FLBIA 90W LV | 90W | 3900K | 10-30Vdc | Supplied with dimmable external driver |
| GL-FLBIA 90W-RT-HV | 90W | 3900K | 100-305Vac 50 ~60Hz | Supplied with dimmable external driver & 360° rotatable bracket |
| GL-FLBIA 90W-RT-LV | 90W | 3900K | 10-30Vdc | Supplied with dimmable external driver & 360° rotatable bracket |

Material: Powder coated anodized seawater resistant aluminium.

Hardware: Marine Grade A4 316 stainless steel.

Finish: White.

TECHNICAL DATA

Wite Beam/ Lens: 100°

Mounting: Adjustable A4 316 Stainless Steel bracket/ 4mm thickness (optional 360° rotatable bracket available *1) (optional stacking brackets available *2)

IP Rating: IP67 **CRI:** > 85

Luminosity: 14.400Lumens/ 160 Lumens/watt

Power Source: External driver 100-305Vac 50 ~60Hz (10-30Vdc optional)/ Meanwell HLG-100H-42B Dimmable driver (0-10Vdc – PWM – resistance) / Potted driver

Cable: Supplied with 6mtr power cable

Ambient temperature: from -40°C to ~ +55°C

Additional Equipment: Bracket for ceiling or wall installation and for cable tracks

Options: Stainless steel housing, Cable glands for armored cables

Dimensions: 958mmx74,8mmx76,4mm

Fixture Weight: 6,75Kgs.

Compliances: In compliance with rules of maritime classification societies, additional VDE and IEC 60092-306. (Equipment luminaires and lighting accessories for use on vessels)

LED Tube Tri-Proof Light 10Watt 1.500Lumens IP69K Marine Type

LED Tube Tri-Proof Light fixtures for exterior applications such as decks and deck rails. Due the water tightness the LTPT series can be installed on the roughest areas on deck.



4

| Description | Power | Light Colour | Voltage | Specialities |
|-----------------|-------|--------------|---------------------|--|
| GL-LTTP 10W -HV | 10W | 3900K | 100-277Vac 50 ~60Hz | Standard supplied with 2pcs fast connecting glands |

Material: A4 316 stainless steel end caps and polycarbonate cover

Hardware: Marine Grade A4 316 stainless steel.

Finish: Transparent White.

TECHNICAL DATA

Mounting: Movable A4 316 Stainless Steel brackets

Lens: 180°

IP Rating: IP69K

CRI: > 85

Luminosity: 150 Lumens/watt

Power Source: 100-277Vac 50 ~60Hz Boke BK-BHL022-0600AM/ Overload, over-voltage, over-temperature, and short circuit protection. / Potted driver

Cable: 2 x M20 fast connecting glands with internal 3-pole terminal block

Ambient temperature: operating temperature -40°C to ~ +55°C

Dimensions: 405mmxØ75mm

Fixture Weight: 0,9Kgs.

Compliances: In compliance with rules of maritime classification societies, additional **VDE and IEC 60092-306**. (Equipment luminaires and lighting accessories for use on vessels)



LED Tube Tri-Proof Light 20Watt 3.000Lumens IP69K Marine Type

LED Tube Tri-Proof Light fixtures for exterior applications such as decks and deck rails. Due the water tightness the LTPT series can be installed on the roughest areas on deck.



4

| Description | Power | Light Colour | Specialities |
|----------------------|-------|--------------|---|
| GL-LTTP 20W -HV | 20W | 3900K | Standard supplied with 2pcs fast connecting glands |
| GL-LTTP 20W -HV+BE | 20W | 3900K | Standard supplied with 3pcs fast connecting glands and 3H battery powered EMG |
| GL-LTTP 20W -HV+E | 20W | 3900K | Standard supplied with 3pcs fast connecting glands and 20-30Vdc powered EMG |
| GL-LTTP 20W -HV-BLUE | 20W | 3900K | Standard supplied with 2pcs fast connecting glands |
| GL-LTTP 20W -HV-RED | 20W | 3900K | Standard supplied with 2pcs fast connecting glands |

Material: A4 316 stainless steel end caps and polycarbonate cover

Hardware: Marine Grade A4 316 stainless steel.

Finish: Transparent White.

TECHNICAL DATA

Mounting: Movable A4 316 Stainless Steel brackets

Lens: 180°

IP Rating: IP69K

CRI: > 85

Luminosity: 150 Lumens/watt

Power Source: 100-277Vac 50 ~60Hz(20-30Vdc emergency circuit optional or 3 hours battery powered emergency circuit optional)/ Boke BK-BHL042-1100AM/ Overload, over-voltage, over-temperature, and short circuit protection. / Potted driver

Cable: 2 x M25 fast connecting glands with internal 3-pole terminal block

Ambient temperature: operating temperature -40°C to ~ +55°C

Dimensions: 880mmxΦ75mm

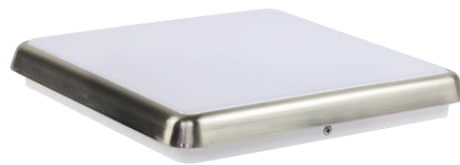
Fixture Weight: 1,7Kgs.

Compliances: In compliance with rules of maritime classification societies, additional **VDE and IEC 60092-306**. (Equipment luminaires and lighting accessories for use on vessels)



Ultra Slim LED Ceiling Light 12Watt 1.200Lumens Marine Type

Ceiling fixtures for suitable for various interior applications such as accommodation, passengers' area, corridor workshop, stairways etc. Can be installed surface- or recessed. Available with emergency circuit.



| Description | Power | Light Colour | Specialities |
|----------------------|-------|------------------------------|--|
| GL-USCLL-12W-MH-VH | 12W | 85-265Vac 50~60Hz | White/Standard supplied with fixed aluminium bracket and heavy spring clips |
| GL-USCLL-12W-MH-VH+E | 12W | 85-265Vac 50~60Hz + 20-30Vdc | White/Standard supplied with fixed aluminium bracket and heavy spring clips |
| GL-USCLL-12W-SL-VH | 12W | 85-265Vac 50~60Hz | Silver/Standard supplied with fixed aluminium bracket and heavy spring clips |
| GL-USCLL-12W-SL-VH+E | 12W | 85-265Vac 50~60Hz + 20-30Vdc | Silver/Standard supplied with fixed aluminium bracket and heavy spring clips |

Material: Polyamide (PA) and polycarbonate cover

Finish: White (Silver trim ring optional)

TECHNICAL DATA

Mounting: Surface /Fixed aluminium bracket or Recessed /Heavy spring clips for ceilings max. 35mm

Lens: 160°

IP Rating: IP55

CRI: > 85

IK: 10

Luminosity: 100 Lumens/watt

Power Source: 85-265Vac 50~60Hz (20-30Vdc emergency circuit optional)

Ambient temperature: operating temperature -20°C to ~ +50°C

Dimensions: 250mmx250mmx24mm

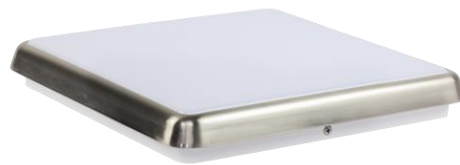
Fixture Weight: 0,7Kgs.

Compliances: In compliance with rules of maritime classification societies, additional **VDE and IEC 60092-306**. (Equipment luminaires and lighting accessories for use on vessels).



Ultra Slim LED Ceiling Light 18Watt 1.800Lumens Marine Type

Ceiling fixtures for suitable for various interior applications such as accommodation, passengers' area, corridor workshop, stairways etc. Can be installed surface- or recessed. Available with emergency circuit.



| Description | Power | Light Colour | Specialities |
|----------------------|-------|------------------------------|--|
| GL-USCLL-18W-MH-VH | 18W | 85-265Vac 50~60Hz | White/Standard supplied with fixed aluminium bracket and heavy spring clips |
| GL-USCLL-18W-MH-VH+E | 18W | 85-265Vac 50~60Hz + 20-30Vdc | White/Standard supplied with fixed aluminium bracket and heavy spring clips |
| GL-USCLL-18W-SL-VH | 18W | 85-265Vac 50~60Hz | Silver/Standard supplied with fixed aluminium bracket and heavy spring clips |
| GL-USCLL-18W-SL-VH+E | 18W | 85-265Vac 50~60Hz + 20-30Vdc | Silver/Standard supplied with fixed aluminium bracket and heavy spring clips |

Material: Polyamide (PA) and polycarbonate cover

Finish: White (Silver trim ring optional)

TECHNICAL DATA

Mounting: Surface /Fixed aluminium bracket or Recessed /Heavy spring clips for ceilings max. 35mm

Lens: 160°

IP Rating: IP55

CRI: > 85

IK: 10

Luminosity: 100 Lumens/watt

Power Source: 85-265Vac 50~60Hz (20-30Vdc emergency circuit optional)

Ambient temperature: operating temperature -20°C to ~ +50°C

Dimensions: 300mmx300mmx24mm

Fixture Weight: 0,9Kgs.

Compliances: In compliance with rules of maritime classification societies, additional **VDE and IEC 60092-306**. (Equipment luminaires and lighting accessories for use on vessels).



Ultra Slim LED Ceiling Light 20Watt 2.000Lumens Marine Type

Ceiling fixtures for suitable for various interior applications such as accommodation, passengers area, corridor workshop, stairways etc. Can be installed surface- or recessed. Available with emergency circuit.



| Description | Power | Light Colour | Specialities |
|--------------------|-------|-------------------|---|
| GL-USCLL-20W-MH-VH | 20W | 85-265Vac 50~60Hz | White/Standard supplied with fixed aluminium bracket and heavy spring clips |

Material: Polyamide (PA) and polycarbonate cover

Finish: White (Silver trim ring optional)

TECHNICAL DATA

Mounting: Surface /Fixed aluminium bracket or Recessed /Heavy spring clips for ceilings max. 35mm

Lens: 160°

IP Rating: IP55

CRI: > 85

IK: 10

Luminosity: 100 Lumens/watt

Power Source: 85-265Vac 50~60Hz.

Ambient temperature: operating temperature -20°C to ~ +50°C

Dimensions: 320mmx320mmx24mm

Fixture Weight: 1,7Kgs.

Compliances: In compliance with rules of maritime classification societies, additional **VDE and IEC 60092-306**. (Equipment luminaires and lighting accessories for use on vessels).



GoldLED- SELO Ceiling Light



| Model | Power (W) | Color Tempr.(K) | Luminosity | Dimensions(mm) a b c | Power Factor | CRI | Hz | IP Range |
|-------------------|-----------|-----------------|------------|----------------------|--------------|-----|---------|----------|
| GOLDLED- SELO 118 | 20Watt | 4000-6500 | 2000lm | 663X85X85mm | >0.95 | >80 | 50 - 60 | IP65 |
| GOLDLED- SELO 218 | 36Watt | 4000-6500 | 3600lm | 1273x85x85mm | >0.95 | >80 | 50 - 60 | IP65 |

Technical Information:

Temperature Colour: 6500K

Fire Protection: 650°

Photobiological Risk Group: RG1

Beam Angle: 160°

Operating Temperature: -20°C - +45°C +

Light Source: Mid Power LED

Material Fixture: GRP (Glass Reinforced Polyester) body.

Diffuser: PC

Impact protection: IK08

Mounting Type: Cable Tray/Surface Mounted

Standards: EN60598-1-2, EN62262, EN60529, EN13032, LM79, LM80, TM21



EN 60598-2-2



IP65



GoldLED Ceiling Light T8 IP65 (indoor use)



Body: ABS (Acrylonitrile butadiene styrene) + PS
(Polystyrene)

| Product code | Lamp type | Dimensions |
|---------------|---------------------|-------------------|
| GoldLED-218/B | 2 X T8 LED tube 9WL | L667XW150XH106mm |
| GoldLED-236/B | 2 X T8 LED tube 18W | L1264XW150XH110mm |



LED Tube T8 Isolated Driver



| Voltage | Color Range | TypeLED | CRI | Beam Angle | Warranty | Lifetime |
|------------|---------------------|---------|-----|------------|----------|---------------|
| AC165-277V | 3000K -4500K -6500K | SMD2835 | >85 | 180 D | 4 Years | 25.000 `Hours |

| Product | Power | Lumen | Matterial | Dimensions |
|----------------------|-------|---------|--------------------|---------------|
| GoldLED-Tube-T8S 9W | 9W | 1.080lm | plastic+ aluminium | Φ26 x 588 mm |
| GoldLED-Tube-T8S 18W | 18W | 2.160lm | plastic+ aluminium | Φ26 x 1197 mm |

Ambient Temperature: -20°C +40°C



*** Isolated Drivers**

Certificates

BIS, SASO, CE-LVD-EMC, RoHs, IES, TUV, EAC, ISO9001, SAA, Intertek TIR

EN 60598-2-1



LED Tube T8 Isolated Driver for Ships 580mm (for Japanese ships)



| Voltage | Color Range | TypeLED | CRI | Beam Angle | Warranty | Lifetime |
|-------------|---------------------|---------|-----|------------|----------|---------------|
| AC85 - 277V | 3000K -4500K -6500K | SMD2835 | >85 | 180 D | 2 Years | 25.000 `Hours |

Ambient Temperature: -20°C +40°C0

| Product | Power | Lumen | Matterial | Dimensions |
|---------------------|-------|---------|--------------------|-------------|
| GoldLED-Tube-T8S 9W | 9W | 1.080lm | plastic+ aluminium | Φ26 x 580mm |



EPISTAR



*** Isolated Drivers**

Certificates

BIS, SASO, CE-LVD-EMC, RoHs, IES, TUV, EAC, ISO9001, SAA, Intertek TIR

EN 60598-2-1



LED Tube T8 Isolated Driver (one pin)



| Voltage | Color Range | TypeLED | CRI | Beam Angle | Warranty | Lifetime |
|-----------|---------------------|---------|-----|------------|----------|---------------|
| A855-265V | 3000K -4500K -6500K | SMD2835 | >80 | 180 D | 2 Years | 25.000 'Hours |

Ambient Temperature: -20°C +40°C

| Product | Power | Lumen | Matterial | Dimensions |
|---------------------|-------|--------|--------------------|-------------|
| GoldLED-Tube-T8S 9W | 9W | 900 lm | plastic+ aluminium | Φ26 x 600mm |



*** Isolated Drivers**

Certificates

EN 60598-2-1



LED Tube T8 Regular



| Voltage | Color Range | TypeLED | CRI | Beam Angle |
|------------|---------------------|---------|-----|------------|
| AC180-277V | 3000K -4500K -6500K | SMD2835 | >75 | 180 D |

| Product | Power | Lumen | Matterial | LED pieces | Dimensions |
|----------------------|-------|--------|--------------------|------------|--------------|
| GoldLED-Tube-T8R 9 W | 9W | 900lm | plastic+ aluminium | 44 | Φ26 x 600mm |
| GoldLED-Tube-T8R 18W | 18W | 1800lm | plastic+ aluminium | 96 | Φ26 x 1200mm |

Certificates



Multi-Purpose Cabinet Lights 20Watt 2.600Lumens Marine Type



TECHNICAL DATA

Material: Polyamide and Polycarbonate cover

Lens: 140°

Mounting: Surface Mount

Protection degree: IP44

Power Source: 85-265Vac 50-60Hz

CRI: >85

Colour Temperature: 3000K Warm White

Finish: Silver Grey

Ambient temperature: from -20°C to +45°

Supplied with on-off switch.

| Description | Power W | Luminosity | Dimensions mm | IP Protection | Weight |
|--------------|---------|------------|---------------|---------------|--------|
| GL- SMPL 20W | 10W | 130lm/W | 1180x60x30 | IP44 | 0,6Kgs |

ETL Certified

SAA Certified

In compliance with rules of maritime classification societies, additional **VDE and IEC 60092-306**. (Equipment luminaires and lighting accessories for use on vessels)



Cabin Bunk LED Light 8Watt 800Lume Marine Type



TECHNICAL DATA

Material: Polyamide (PA) and Polycarbonate cover

Lens: 90°

Mounting: Surface Mount

Protection degree: IP20

Power Source: 85-265Vac 50-60Hz/Ply Power LAG20-18U/short circuit protection/potted driver

USB: 2x5V/1A

CRI: >85

Colour Temperature: 3000K Warm White

Finish: Anthracite Grey/White

Ambient temperature: from -20°C to +45°

Standard supplied with dimmable driver and double USB ports.

| Description | Power W | Luminosity | Dimensions mm | IP Protection | Weight |
|-------------|---------|------------|---------------|---------------|--------|
| GL- SCBL 8W | 8W | 100lm/W | 345x156x63 | IP | 0,6Kgs |

In compliance with rules of maritime classification societies, additional **VDE and IEC 60092-306**. (Equipment luminaires and lighting accessories for use on vessels)



GL- Mirror Light 10W Marine Type



TECHNICAL DATA

Material: Polyamide and Polycarbonate cover

Lens: 90°

Mounting: Surface Mount

Protection degree: IP44

Power Source: 85-265Vac 50-60Hz

CRI: >85

Colour Temperature: 3000K Warm White

Finish: Silver Grey

Ambient temperature: from -20°C to +45°

Supplied with on-off switch and covered outlet.

Installation: Internal 3-pole power terminal

| Description | Power W | Luminosity | Dimensions mm | IP Protection | Weight |
|----------------------|---------|------------|---------------|---------------|--------|
| GL- Mirror Light 10W | 10W | 1000 | 614x90x56 | IP44 | 0,8Kgs |

In compliance with rules of maritime classification societies, additional **VDE and IEC 60092-306**.

(Equipment luminaires and lighting accessories for use on vessels)





GL EXP03 MLED EX-Proof Zone 2.22 Metal housing



APPLICATION

The luminaire is designed to light the industrial areas and facilities, also outdoor spaces with an explosion hazard of gases, vapours and flammable fogs mixed with air and inflammable dust and fibers mixed with air. Hazardous zones: 2,22. Luminaire for outdoor use limited to space partially protected against the weather – ie .: sheds, roofing, etc. For areas fully exposed to the weather conditions see dedicated version EXP 83 MLED.../KAWN (separate catalogue card)

TECHNICAL DATA

Type of housing: gas: Ex nA I dust: Ex tc
Explosion group: gas: IIC, IIB, IIA I dust: IIIC, IIIB, IIIA
Temperature class: T4, T3, T2, T1
Max surface temperature: 65 C
Protection level: gas: Gc I dust: Dc
Protection degree: IP 66/67
Ambient temperature: from -20C to +40C***
 ***Ambient temperature with battery from 0C to +40C

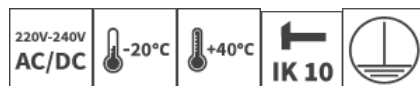
MOUNTING

Two brackets with 2 mounting holes each (type „W“). Recommended brackets ordered separately (only zinc coated steel housing).
 Stainless steel housing has welded brackets type „W“

CONSTRUCTION DETAILS

Housing: zinc coated steel housing powder painted white Or stainless steel SS304 or SS316
 Diffuser: UV stabilized strengthened polycarbonate
 Diffuser clips: stainless steel
 Mounting plate: zinc coated steel sheet powder painted

| Description | Power W | Luminous Flux Lm | Dimensions mm | IP Protection | IK Class |
|---------------------------------------|---------|------------------|---------------|---------------|----------|
| EXP 03-MLED220/211/840 | 25W | 3760 | 730xx195x132 | IP66/IP67 | IK10 |
| EXP 03-MLED240/417/840 | 50W | 8440 | 1340xx195x132 | IP66/IP67 | IK10 |
| EXP 03-MLED220/211/840/SS304 | 25W | 3760 | 730xx195x132 | IP66/IP67 | IK10 |
| EXP 03-MLED240/417/840/SS304 | 50W | 8440 | 1340xx195x132 | IP66/IP67 | IK10 |
| EXP 03-MLED220/211/840/A3 3 h. emerg. | 25W | 3760 | 730xx195x132 | IP66/IP67 | IK10 |



WARRANTY: 5 YEARS

GL-LED Robust Tri-proof ATEX Light



| Model | Power | Lumens | Op. Voltage | Beam angle | CRI | IP |
|-----------------------------------|-------|--------|--------------|------------|-----|----|
| GL - LED Tri proof Light ATEX 30W | 30W | 3.000 | AC 100--305V | 120° | >80 | 66 |
| GL - LED Tri proof Light ATEX 60W | 60W | 6.000 | AC 100--305V | 120° | >80 | 66 |

Specifications:

Operating Voltage: 100-305Vac 50 ~60Hz

Driver: 30Watt – Sosen Electronics SS-35H series. /60Watt – Sosen Electronics SS-60H series

Ta: -40° - +55°

Material Fixture: Hard Anodized Aluminium, Polycarbonate & A4 316 Stainless Steel Parts

Weight: 30Watt – 4.7kg

60Watt – 6.6kg

Dimensions: 30Watt: 940mm x 140mm x 80mm – 37" x 5.5" x 3.15" (W x H x D)

60Watt: 1.540mm x 140mm x 80mm – 60.63" x 5.5" x 3.15" (W x H x D)

Certifications:

EMC Directive 204/108/EC

EN 55105: 2006+A1: 2007

EN 61000-3-2: 2006/A2: 2009

EN 616000-3-3: 2008;

EN 61547: 1995+A1: 2000

ATEX Explosion Proof Certified for Europe

UL8750 & UL844 on request

In compliance with IEC60092-306



UL1598 & UL844 Certified

EX Certified

SELO – Ex-proof Ceiling Light MLED



| Code No | Power W | Luminous Flux Lm | Dimensions mm | Input Voltage (V) | CRI | Power Fac. (cos) | Ral Code | Frequency | IP Protection | IK Class |
|-----------------|---------|------------------|---------------|-------------------|-----|-------------------|----------|-----------|---------------|----------|
| GL-EXP SELO 25W | 25W | 2750 | 670x85x125 | 220-240 | >80 | >0.95 | 1023 | 50-60 | IP65 | IK08 |
| GL-EXP SELO 45W | 45W | 4950 | 1280x85x125 | 220-240 | >80 | >0.95 | 1023 | 50-60 | IP65 | IK08 |

| | |
|----------------------------|--|
| • Body | • GRP |
| • LED | • SMD mid power |
| • Optical Cover / Diffuser | • High transmission PMMA opal cover with UV protection, non-yellowing throughout lifetime of the luminaire |
| • Coverage | • II 3G Ex nR IIC T6 Gc / II 3D Ex tc IIIC T 80° C Dc |
| • Driver | • ENEC certified |
| • Options | • 4000K / 6500K |

EN 60598-2-1





Warranty terms of our company's LED technology lightings/lamps.

- The warranty period for the good operation of the lighting units or lamps, is valid from the day of purchase of the product.
- The warranty is covered by replacing the defective lighting unit with a new one of the same power and voltage as the previous one.

The Warranty does not apply to the following cases:

1. Damage resulted from failure or mishandling during installation/connection.
Installations/connections of lighting units/lamps must be done by qualified electricians.
2. The damage was caused by exceeding our lamp specifications or if exceeds the given operating temperature range.
3. The damage was caused by inappropriate or worn infrastructure, lamp-holders, cables, panels, etc.
4. The damage was caused by acts of God (floods, lightning, etc.).
5. The damage was caused by acts of terrorism, sabotage.
6. The damage was caused by severe changes in the supplied electric current or the connection to a supplied electric current outside the specifications of the lamp (lighting line).
7. The damage was caused by misuse or during the transportation or storage of the product.